

MS Exchange Brick Level Server Backup – User Guide

TABLE OF CONTENTS

Introduction.....	2
Features.....	2
System Requirements.....	3
Exchange Brick-Level Mailbox Backup.....	4
Granting Mailbox rights	7
Exchange Brick-Level Mailbox Restore	17
Dismounting Database.....	20
Troubleshooting	22
IBackup Support.....	23

Introduction

IBackup for Windows provides an easy, secure and reliable way to backup individual mailboxes on the MS Exchange Server Store to your IBackup account with the 'Exchange Brick-Level Mailbox Backup' feature. The application backs up the contents of the selected mailbox or mailboxes to a Personal Folder (.PST) file that can be accessed using Microsoft Outlook at any point of time.

It is designed to backup individual mailboxes or an individual email to a Personal Folder (.PST) file for the selected mailbox store.

Note: This is not a method for the complete backup (or recovery) of the Exchange Server databases.

Ensure that appropriate Mailbox Rights have been granted to perform the 'Exchange Brick-Level Mailbox Backup' of selected mailbox(es).

Features

- Online backup of individual Mailboxes for the selected Mailbox stores without interrupting the running MS Exchange Server services
- Backups can be scheduled for a future date and time with various scheduling options
- Secure backups with the highest level of 128-bit SSL encryption on transmission, optional 256-bit proprietary encryption on storage with a user-defined encryption key that is not stored anywhere on IBackup servers
- Easy-to-use wizards for scheduling the backup job
- Email and Desktop notifications on completion of backup
- Session based logs of backup activities

System Requirements

Exchange Server Edition 2010

- x64 architecture-based computer with Intel processor that supports Intel Extended Memory 64 Technology (Intel EM64T) or AMD processor that supports the AMD64 platform
- Windows Server 2008 Service Pack 2 (SP2) or later or Windows Server 2008 R2
- Minimum 2 GB of RAM per server and sufficient space in the hard disk to store the Exchange Server Mailbox backup files

Note: To perform Exchange 2010 Brick-Level Backup, install the standalone version of MAPI from the Microsoft site.

[Download Standalone version of MAPI](#)

Exchange Server Edition 2007

- IBackup for Windows Version 9.5.2 or higher
- x64 architecture-based computer with Intel processor that supports Intel Extended Memory 64 Technology (Intel EM64T) or AMD processor that supports the AMD64 platform
- Microsoft Windows Server 2008, Windows Server 2003 SP1, Windows Server 2003 x64 or Windows Server 2003 R2 x64, Standard or Enterprise Edition
- Minimum 2 GB of RAM per server and sufficient space in hard disk to store the MS Exchange Server mailbox backup files

Note: To perform Exchange 2007 Brick-Level Backup, you will need to install the standalone version of MAPI from the Microsoft site.

[Download Standalone version of MAPI](#)

Exchange Server Edition 2003

- IBackup for Windows version 9.5.0 or higher
- Microsoft Windows 2000 Server, Windows 2000 Advanced Server, or Windows 2000 Datacenter Server with Service Pack 3 or later
- Microsoft Windows Server 2008, Windows Server 2003, Standard Edition; Windows Server 2003, Enterprise Edition; or Windows Server 2003, Datacenter Edition, with or without any Service Pack
- Microsoft Outlook 2002 or higher
- 133-MegaHertz (MHz) or higher processor. 256 Megabytes (MB) of RAM
- Sufficient space in hard disk to store the MS Exchange Server email backup files (.PST) files

Exchange 2000 Server

- IBackup for Windows version 9.5.0 or higher
- Microsoft Windows 2000 Server, which can co-exist with Microsoft Windows Server 2003 domain controllers and global catalog servers
- MS Exchange Server Service Pack 3
- Microsoft Outlook 2002 or higher Intel Pentium or compatible
- 166-megahertz (MHz) or higher processor
- 128 Megabytes (MB) of RAM, 256 MB recommended
- Sufficient space in hard disk to store the MS Exchange Server email backup files (.PST) files

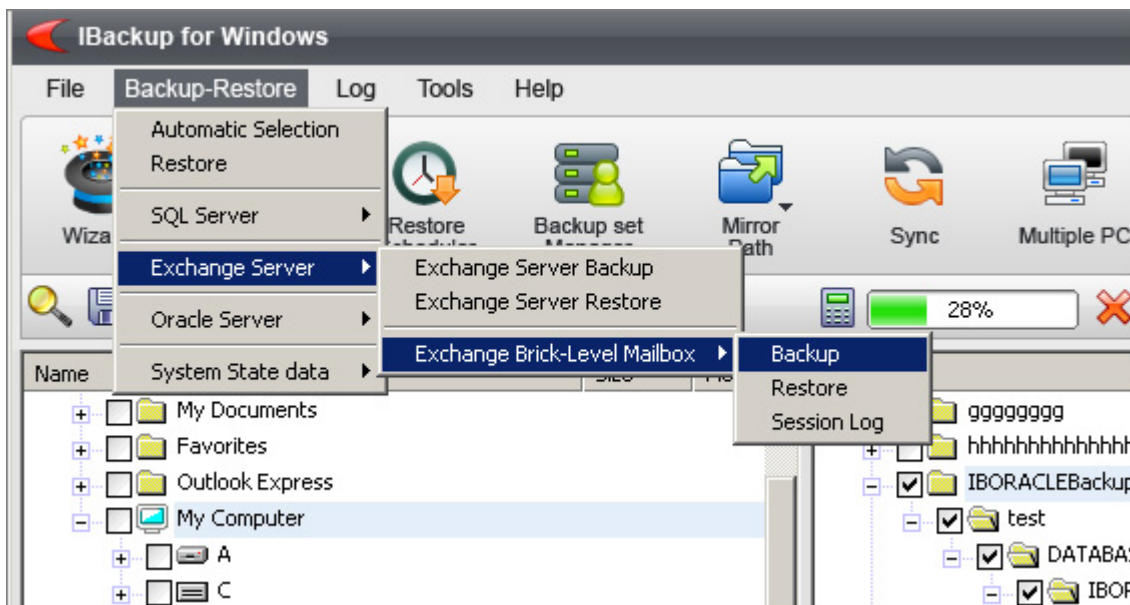
Exchange Brick-Level Mailbox Backup

It is imperative that appropriate **Mailbox Rights** has been granted to perform the 'Exchange Brick-Level Mailbox Backup' of selected mailbox (es).

To backup the MS Exchange Server Mailboxes to your IBackup account, follow the steps given below:

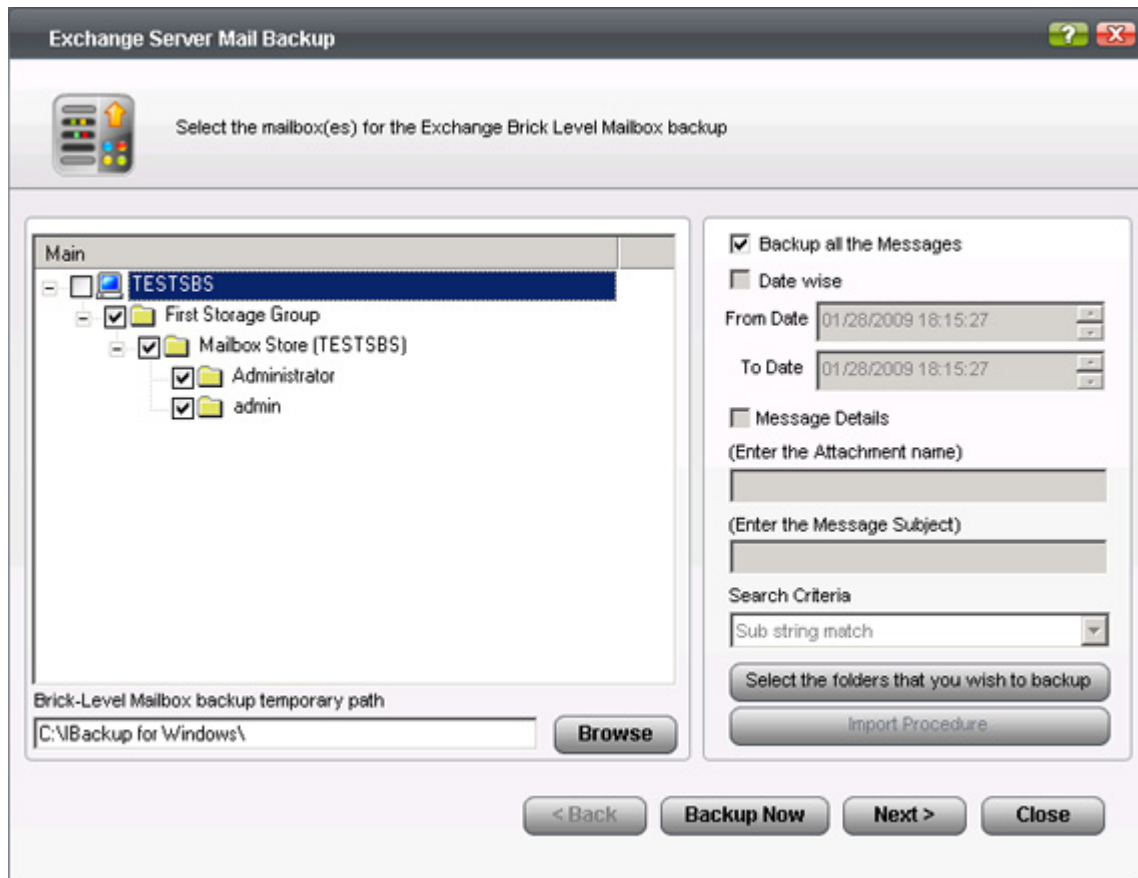
Step 1

Login to the IBackup for Windows application. On the application menu, go to Backup-Restore > Exchange Server > Exchange Brick-Level Mailbox > Backup.



Step 2

Select the individual mailboxes that you wish to backup to your IBackup account from the MS Exchange Server.



Step 3

'Browse' to select a temporary location on your local computer to store the selected MS Exchange Server mailboxes as a Personal Folder (.PST) file.

Note: Ensure that the selected temporary location on your computer has sufficient free space to hold the contents of individual mailboxes of MS Exchange Server. You cannot select the temporary location on the remote location.

Step 4

While selecting mailboxes for backups, you can customize your selection based on the following criteria.

- **Backup all the messages:** This default option backs up the entire mailbox contents.
- **Based on Date:** On selecting this option, you can choose messages between a particular date and time.
- **Based on subject and attachment:** On selecting this option, you can choose messages based on the subject or an attachment.
- **Select individual mailbox folders:** On selecting this option, you can choose the mailbox folders such as 'Inbox', 'Sent Items', 'Deleted Items', 'Calendars', 'Tasks', 'Journals' etc. that you wish to backup.

Step 5

Click on the 'Backup now' button and select a folder in your IBackup account to take backup or click the 'Next' button to select a folder and schedule the backup for a future day and time.

Granting Mailbox rights

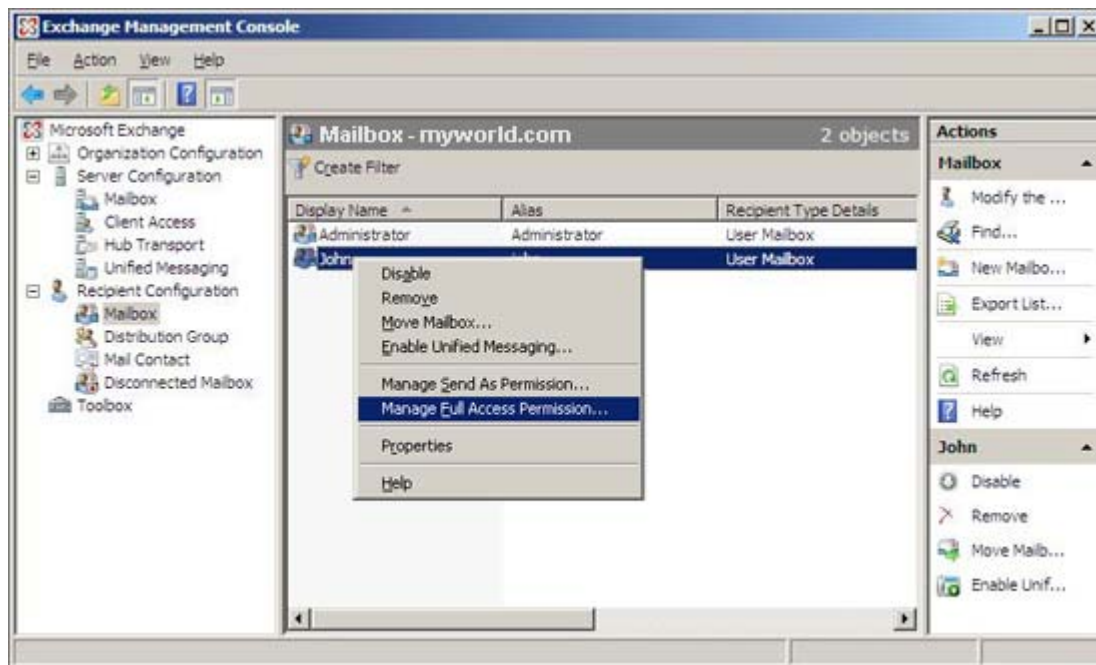
These are the steps that have to be followed to grant access to Exchange 2000/2003/2007 and 2010 Mailbox.

For Exchange 2007 and 2010 Mailbox:

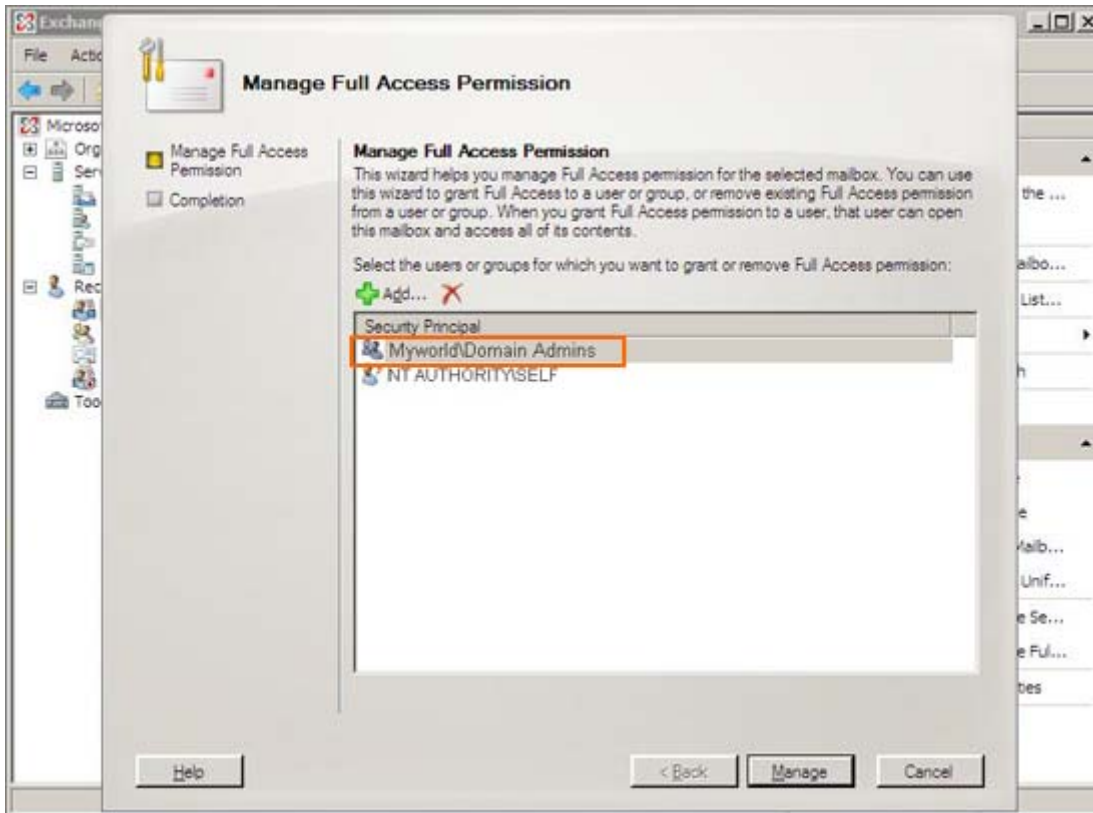
There are two methods for Granting Mailbox rights in 2007/2010 servers:

Exchange Management Console method:

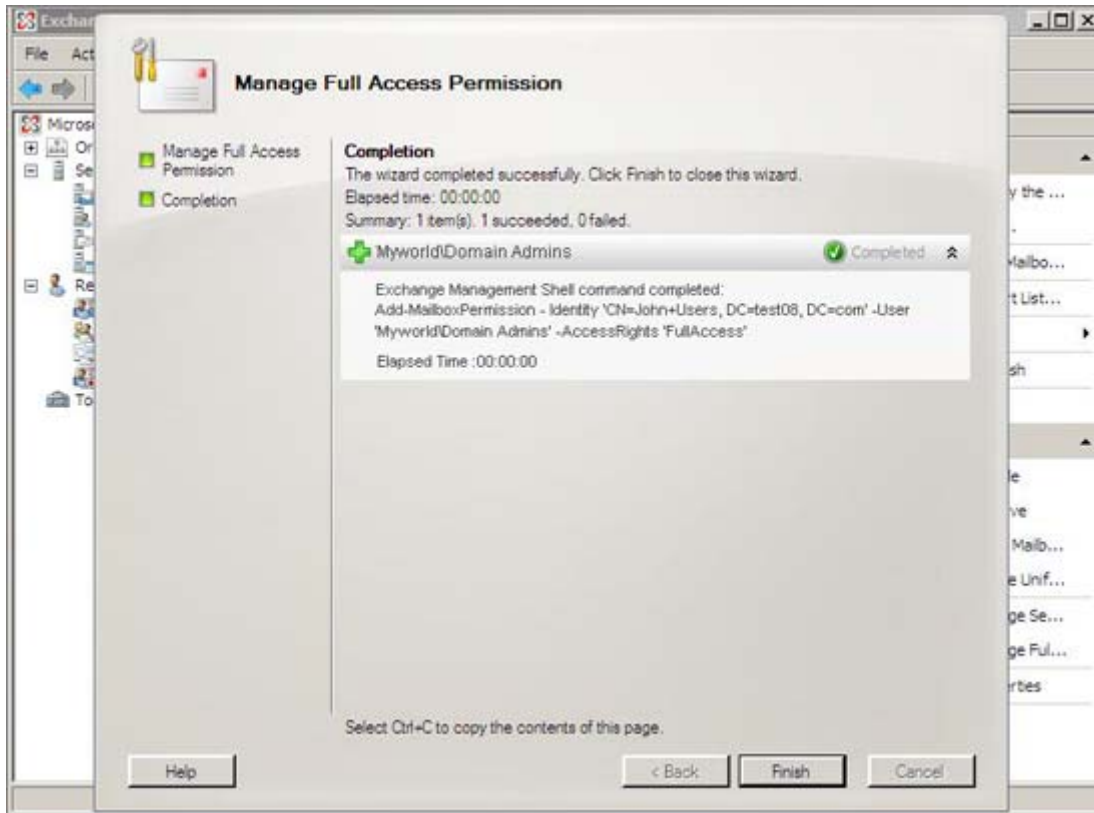
1. Open the 'Exchange Management Console'. Choose the Mailbox for which you want to grant permission. Right-click and select the 'Manage Full Access Permission' menu option.



2. In the 'Manage Full Access Permission' screen, grant full access to the Domain Admins user and click the 'Manage' button.



3. Click 'Finish' to complete the operation.



Exchange 2007/2010 management shell method:

1. Open the Exchange 2007/2010 management shell and enter the following syntax:
2. Add-Mailbox Permission -identity <mailbox name> -access Rights full Access -User "<Domain name>\Domain Admins"

Example: To grant full access to the Mailbox 'Adams'.
Add-MailboxPermission - identity Adams - accessRights fullAccess - User "MyWorld\Domain Admins"

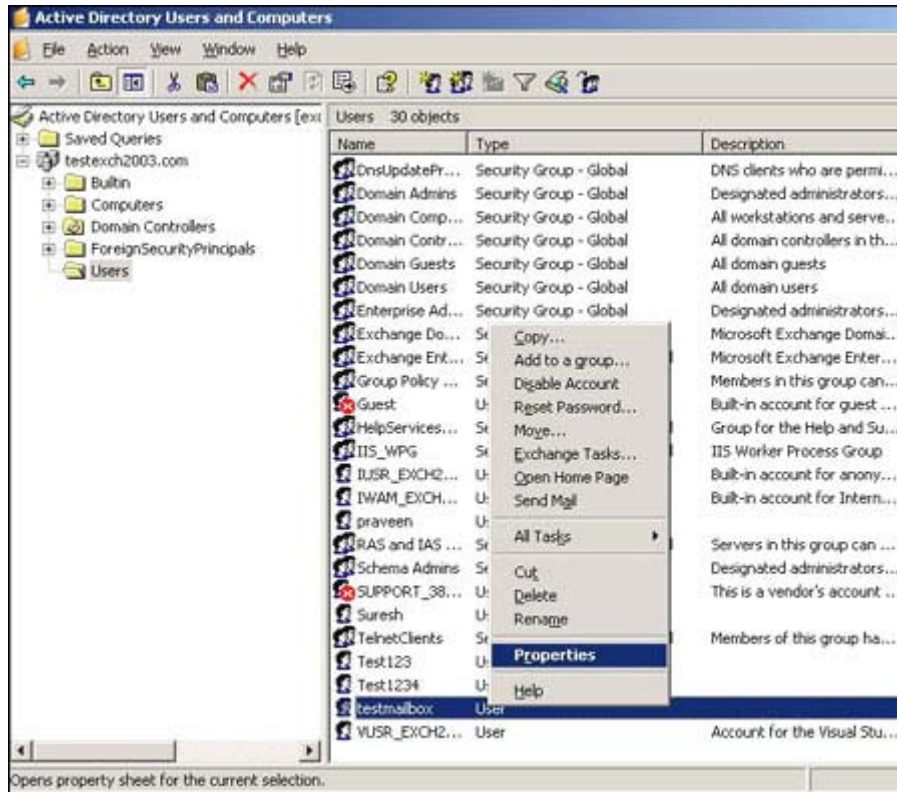
Note: To perform Exchange 2007/2010 Brick-Level Backup, install the standalone version of MAPI from the Microsoft site. [Download Standalone version of MAPI](#)

For Exchange 2000 or Exchange 2003 Mailbox:

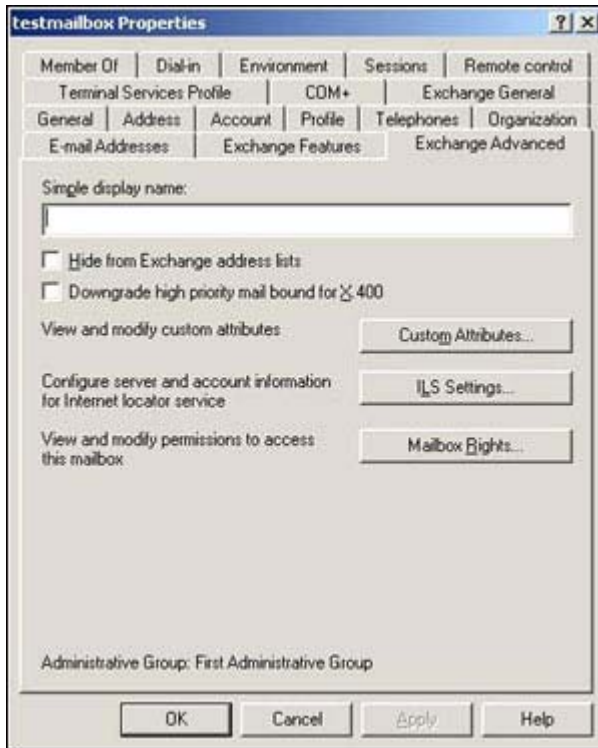
1. Start 'Active Directory Users and Computers'.
2. On the 'View' menu, ensure that the 'Advanced Features' check box is selected.

Note: This is not necessary on Exchange Server 2003 as the 'Exchange Advanced tab' is exposed by default.

3. Right-click on the user for whose mailbox you want to grant permission and choose 'Properties'.



4. On the 'Exchange Advanced' tab, click 'Mailbox Rights

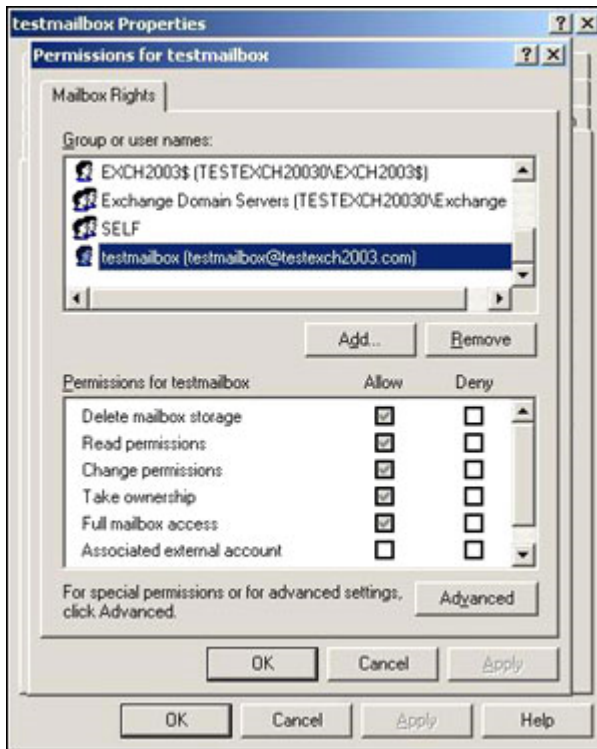


5. Notice that the 'Domain Admins' and 'Enterprise Admins' have both been given 'Deny access' to 'Full Mailbox access'.

6. Click 'Add' and then click on the user/group for which you want to grant access to this mailbox and click 'OK'.

7. Ensure that the user/group is selected in the 'Name' box.

8. In the 'Permissions list', click 'Allow' next to 'Full mailbox access' and click 'OK'.



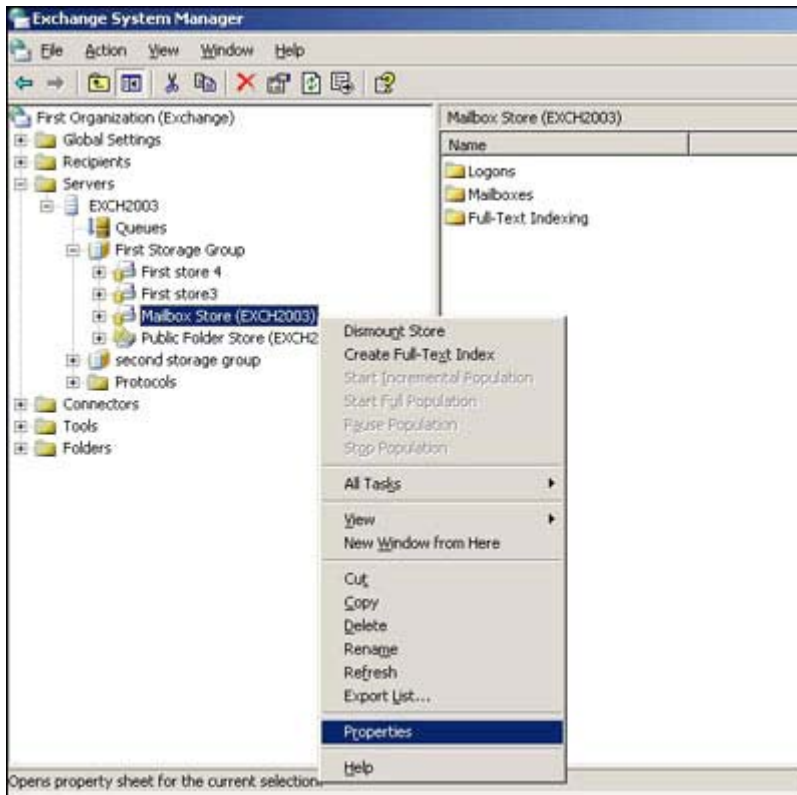
9. Click 'OK' to finish.

Granting rights to mailboxes located within a specific mailbox store

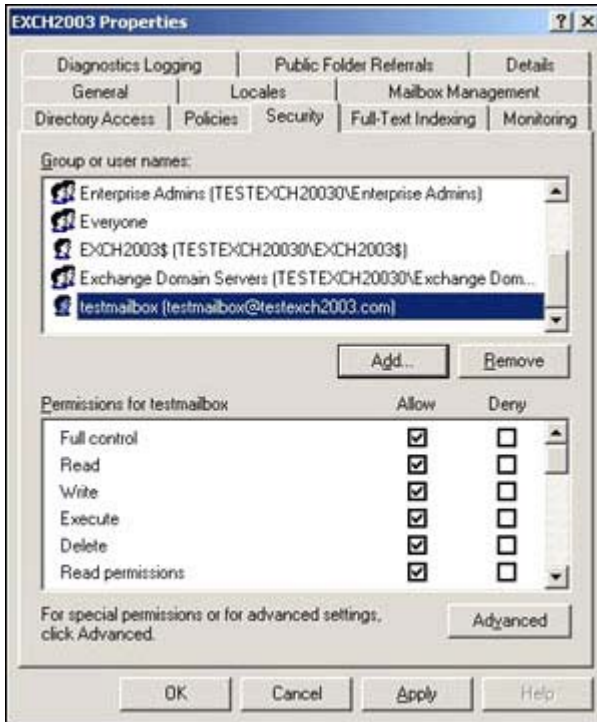
Listed below is the procedure to grant access to Exchange 2000 or Exchange 2003 mailboxes found on a specific mailbox store.

Note: You must have the appropriate Exchange administrative permissions to do so.

1. Start 'Exchange System Manager'.
2. Go to your server object within the appropriate Administrative Group. Expand the server object and locate the required mailbox store within the appropriate 'Storage Group'. Right-click and choose the 'Properties' option.



3. On the 'Properties' window click the 'Security' tab.
4. Click 'Add' and then click on the user/group for whom you want to grant access to the mailboxes and click 'OK'.
5. Ensure that the user/group is selected in the 'Name' box.
6. On the 'Permissions' list, click 'Allow' next to 'Full Control' and then click 'OK'.



Note: Ensure that no 'Deny' checkbox is selected next to the 'Send As' and 'Receive As permissions' options.

7. Click 'OK' to finish

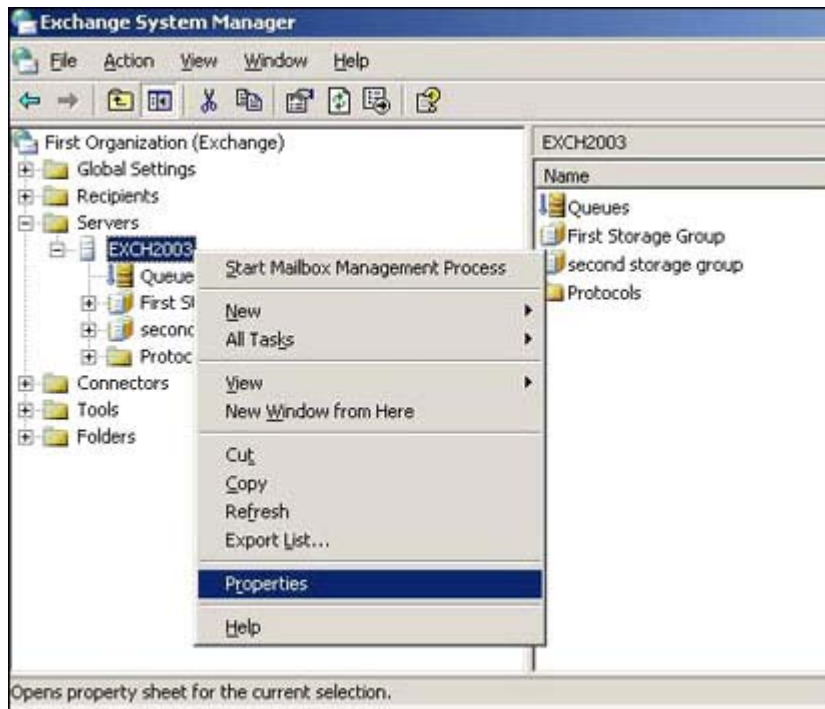
Granting rights to a mailboxes located on a specific server

Listed below is the procedure to grant access to Exchange 2000 or Exchange 2003 mailboxes found on a specific server:

Note: You must have the appropriate Exchange administrative permissions to proceed.

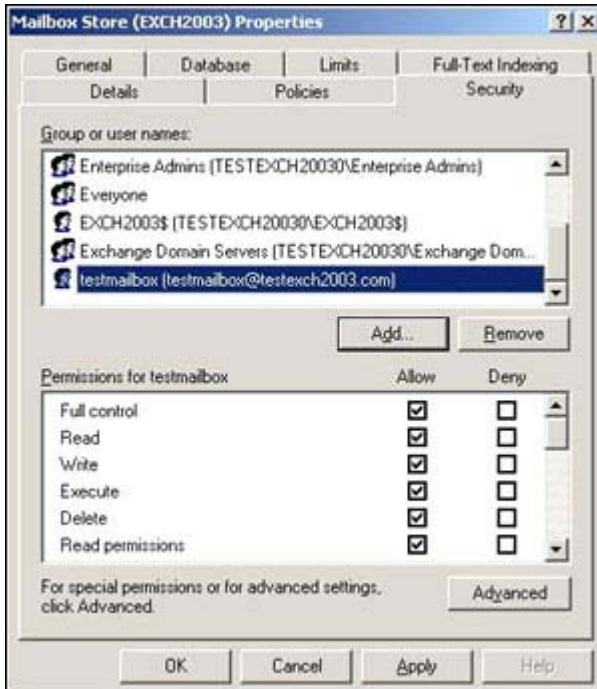
1. Start Exchange System Manager.

- Go to your server object within the appropriate 'Administrative Group'. Right-click on it and choose 'Properties'.



- In the 'Properties' window go to the 'Security' tab.
- Click 'Add' and then click on the user/group for which you want to grant access to the mailboxes and click 'OK'.
- Ensure that the user/group is selected in the 'Name' box.
- On the 'Permissions' list, click 'Allow' next to 'Full Control' and then click 'OK'.

Note: Ensure that no 'Deny' checkbox is selected next to the 'Send As' and 'Receive As permissions' options.



7. Click 'OK' to finish.

Exchange Brick-Level Mailbox Restore

IBackup for Windows provides an easy, secure and reliable way to restore individual emails from a Personal Folder (.PST) file to the MS Exchange Server Store, using the 'Exchange Brick-Level Mailbox Restore'. The application restores the contents of the selected Personal Folder (.PST) file to a corresponding Exchange Server Mailbox.

The IBackup for Windows 'Exchange Brick-Level Mailbox Restore' is designed to restore individual emails from a Personal Folder (.PST) file to the selected Exchange Server Mailbox. The Database has to be **dismounted** before initiating the MS Exchange Server Restore.

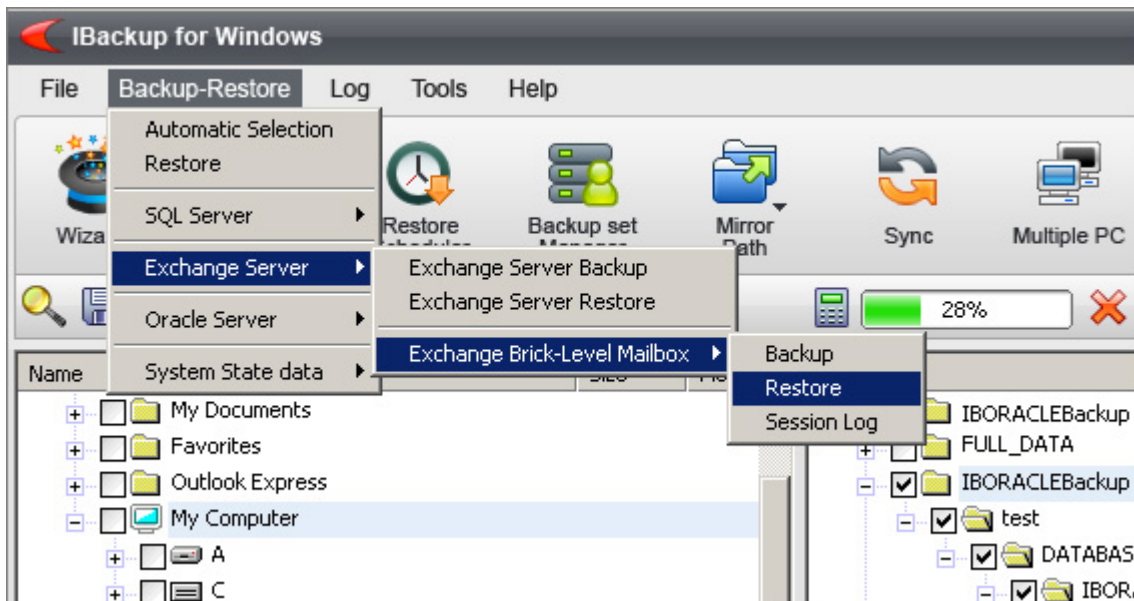
Note: It is recommended that a technically qualified person perform the MS Exchange Server restore operation. Wrong or incorrect usage of the operation can cause irreversible damage to your Exchange Server files.

Restoring MS Exchange Server Mailboxes

To restore individual emails from your Personal Folder (.PST) file to your Exchange Server Mailbox store, follow the steps given below:

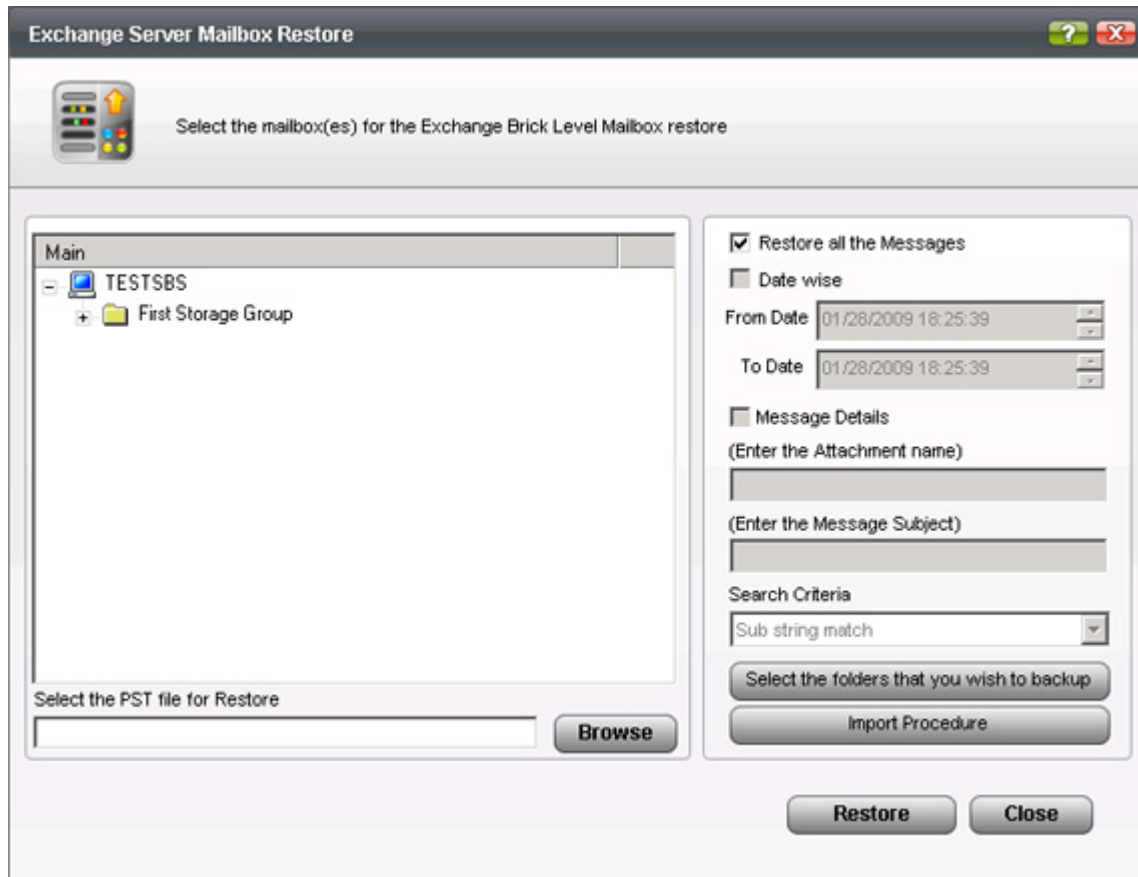
Step 1

On the application menu bar, go to Backup-Restore > Exchange Brick-Level Mailbox > Restore.



Step 2

Click on the 'Browse' button and select the Personal Folder (.PST) file that you wish to restore to your Exchange Server Mailbox.



Step 3

Select the Exchange Server Mailbox to which you want to restore the emails from your Personal Folder (.PST) file.

Step 4

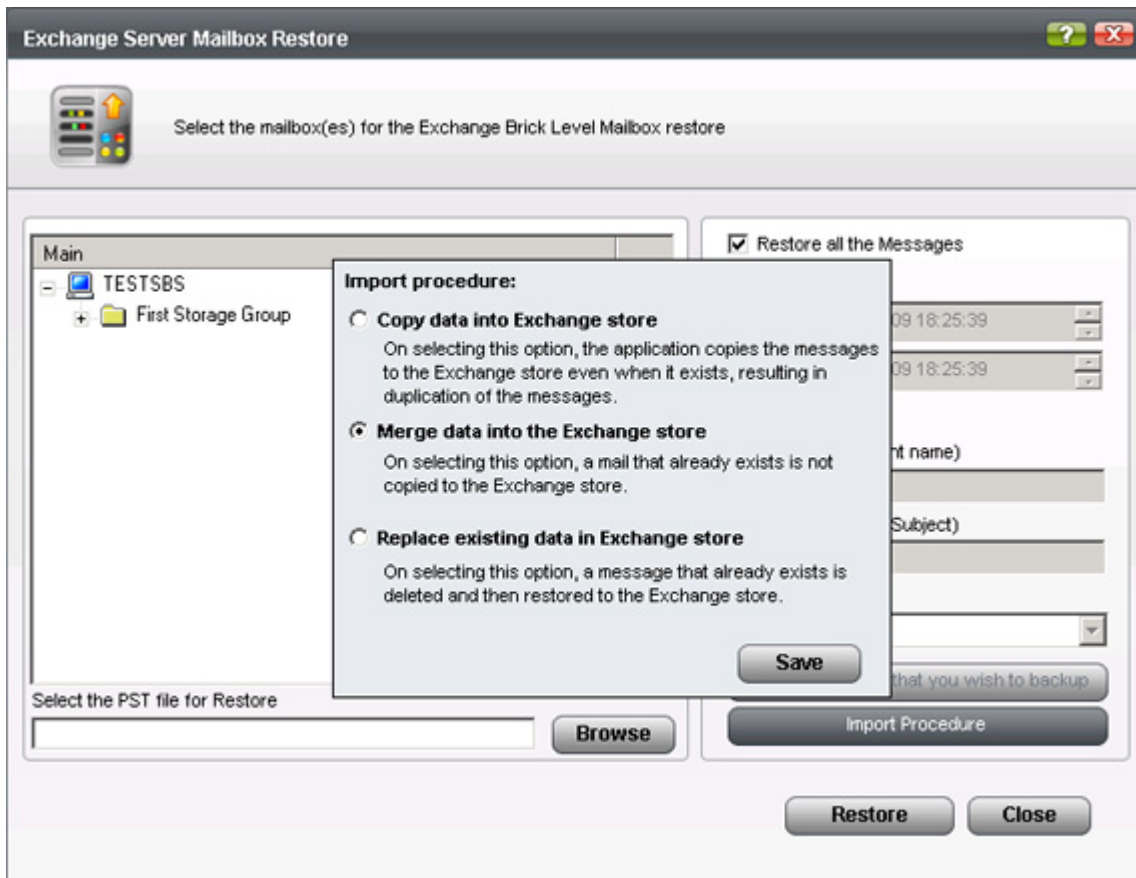
You can use any of the following options to restore the emails from your Personal Folder (.PST) file:

- **Restore all the messages:** This default option restores the entire Personal Folder (.PST) file contents to your Exchange Server store.
- **Based on Date:** This option allows you to select emails falling between a particular date and time.
- **Based on subject and attachment:** This option allows you to select emails based on the subject or attachment.

- **Select individual mailbox folders:** This option allows you select folders such as 'Inbox', 'Sent Items', 'Deleted Items', 'Calendars', 'Tasks', 'Journals' etc. that you wish to restore.

Import procedures:

- **Copy data into Exchange store:** On selecting this option, the application will copy the emails to the Exchange store even if they are already present resulting in duplicate emails being created in the Exchange store.
- **Merge data into the Exchange store:** On selecting this option, the application will check whether the copied email exists in the Exchange store. If so, the email is not be copied on restore.
- **Replace existing data in Exchange store:** On selecting this option, the application will check whether the copied email already exists in the Exchange store. If so, the email is first deleted from the Exchange store and then copied.



Step 5

Click on the 'Restore' button to initiate the Exchange Server Brick-Level restore operation. You can view the logs of the restore process by clicking on the 'View Log' button that appears once the restore operation is complete, irrespective of its success or failure.

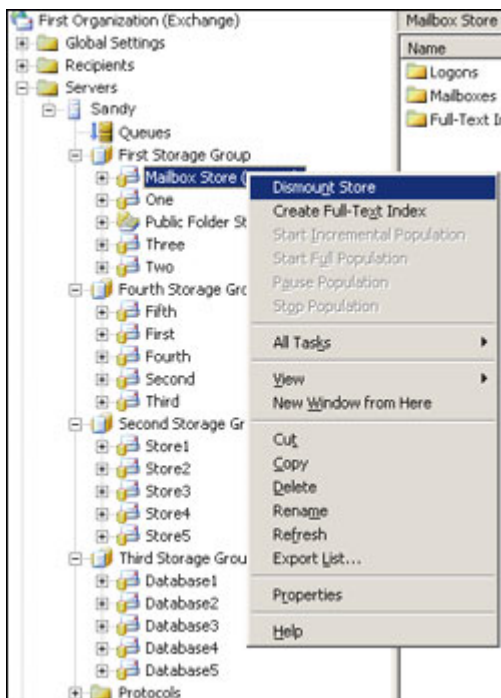
Dismounting Database

These steps have to be performed before initiating the MS Exchange Server Restore operation.

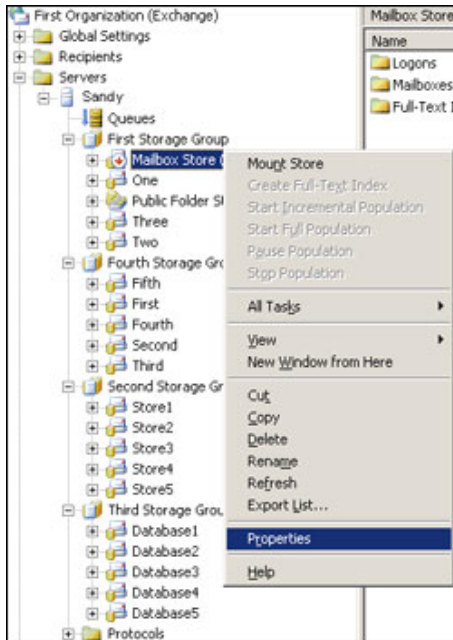
1. Start the MS Exchange System Manager from Start > Programs > Microsoft Exchange > System Manager.

To restore even a single email, you must restore the complete 'Mailbox' store (Database) associated with that particular user. For example: To restore an email stored in the 'First Storage Group/Mailbox Store', restore the complete 'Mailbox' store.

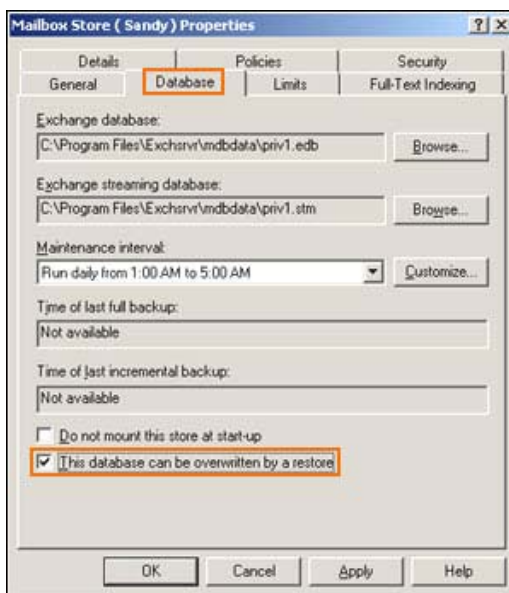
2. Right-click the 'Mailbox' store that you need to restore and choose the 'Dismount Store' option.



3. Right-click the 'Mailbox' stores and choose the 'Properties' option.



4. Select the 'Database' tab from 'Properties' and then enable the option 'This database can be overwritten by a restore'. Now, click 'Apply' followed by the 'OK' button to confirm the operation.



Note: It is recommended that you close the 'MS Exchange System Manager' before initiating the restore operation, once the aforesaid steps are executed.

Troubleshooting

The following are few simple troubleshooting methods, which could resolve few minor problems while working with IBackup for Windows application.

- Windows 2000 you must have service pack 2 or higher installed on the machine for encryption on storage to work properly
- You must have proper privileges to register the files required during installation
- It is highly recommended to have the latest service pack for Windows installed on the computer
- The system must have an ATX power supply and provide appropriate support in order for Automatic Power off to work, otherwise the machine will just reboot
- IBackup for Windows requires proxy settings if the computer is behind a proxy
- When the application hangs for a long time and no transfer occurs. Logout of the application and Re-login into the application.



IBackup Support

Pro Softnet Corporation,
IBackup Division,
26115 Mureau Road, Suite A,
Calabasas, CA 91302.

Telephone

1-800-949-3555 ext 3 within USA
1-818-251-4200 ext 3 outside USA
Monday - Friday, 6:00 AM to 6:00 PM PST

Fax

1-818-878-9208

Email

support@ibackup.com

For more information visit: <http://www.ibackup.com/>