

## MS SharePoint Server Backup - User Guide

### TABLE OF CONTENTS

Introduction.....	2
SharePoint Server Backup Features .....	2
SharePoint Server Restore Features.....	2
System Requirements .....	3
SharePoint Server Backup .....	4
SharePoint Server Restore .....	7
Troubleshooting Tips .....	9
IBackup Support .....	10

## Introduction

IBackup for Windows provides an efficient and secure granular backup / restore for Microsoft SharePoint Server thereby reducing costs, improving scalability and data protection of the entire SharePoint Server.

## SharePoint Server Backup Features

- Backup an entire site collection / Web application
- Backup a specific site inside a site collection including or excluding content in sub sites
- Backup a list or document libraries or even of a folder inside a document library
- Option to retrieve deleted files from Trash within a 30 day period
- Provision to restore 30 previous versions of all backed up files
- Enhanced security with 256-bit AES encryption on transfer and storage with a user-defined encryption key that is not stored anywhere on IBackup servers
- Easy-to-use wizards for scheduling backup and restore operations
- E-mail and desktop notifications on completion of the backup operation
- Session-based logs of backup activities

## SharePoint Server Restore Features

- Restore site collections, individual sites, or an individual document, lists, ASPX pages, templates, contacts in minutes
- Restore SharePoint objects directly from a backup and avoid using a SharePoint recovery farm or rebuilding your entire production database
- Search and restore any documents and specific document versions
- Perform granular restore without using a SharePoint recovery farm
- Detailed logging of all restore operations

**Note:** Refer <http://www.ibackup.com/old-version.htm> for the details related to architectural / feature set changes to the IBackup application (accounts created prior to 10th August 2011.)

## System Requirements

### System Requirements

#### SharePoint Server 2007

- Windows Server 2003 with SP1 or higher, Windows SBS 2011
- 1 GB RAM
- Sufficient hard disk space to store the files for temporary backup and restore

#### SharePoint Server 2010

- Windows 2008 server, Windows SBS 2011
- 4 GB RAM
- Sufficient hard disk space to store the files for temporary backup and restore

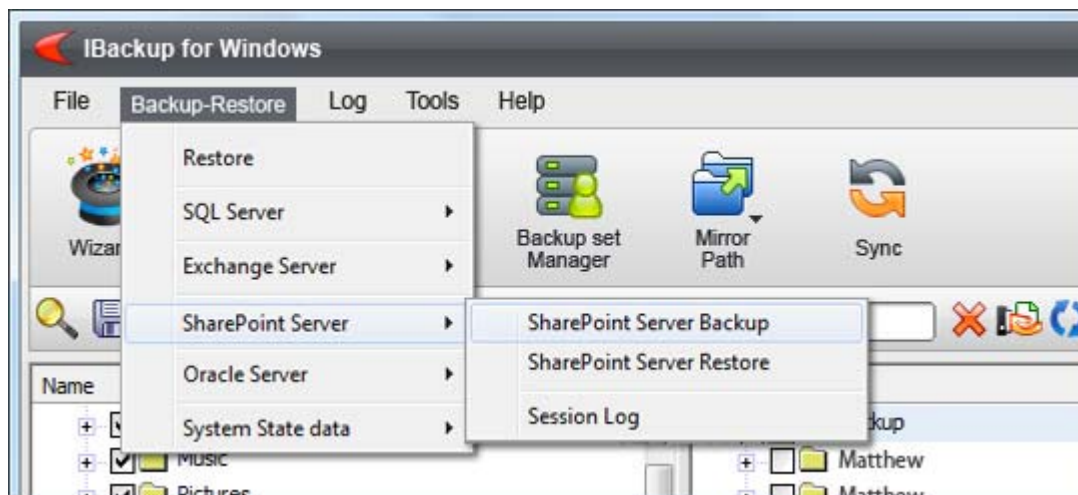
## SharePoint Server Backup

Listed below are the steps to backup your MS SharePoint server using IBackup for Windows:

### Step 1

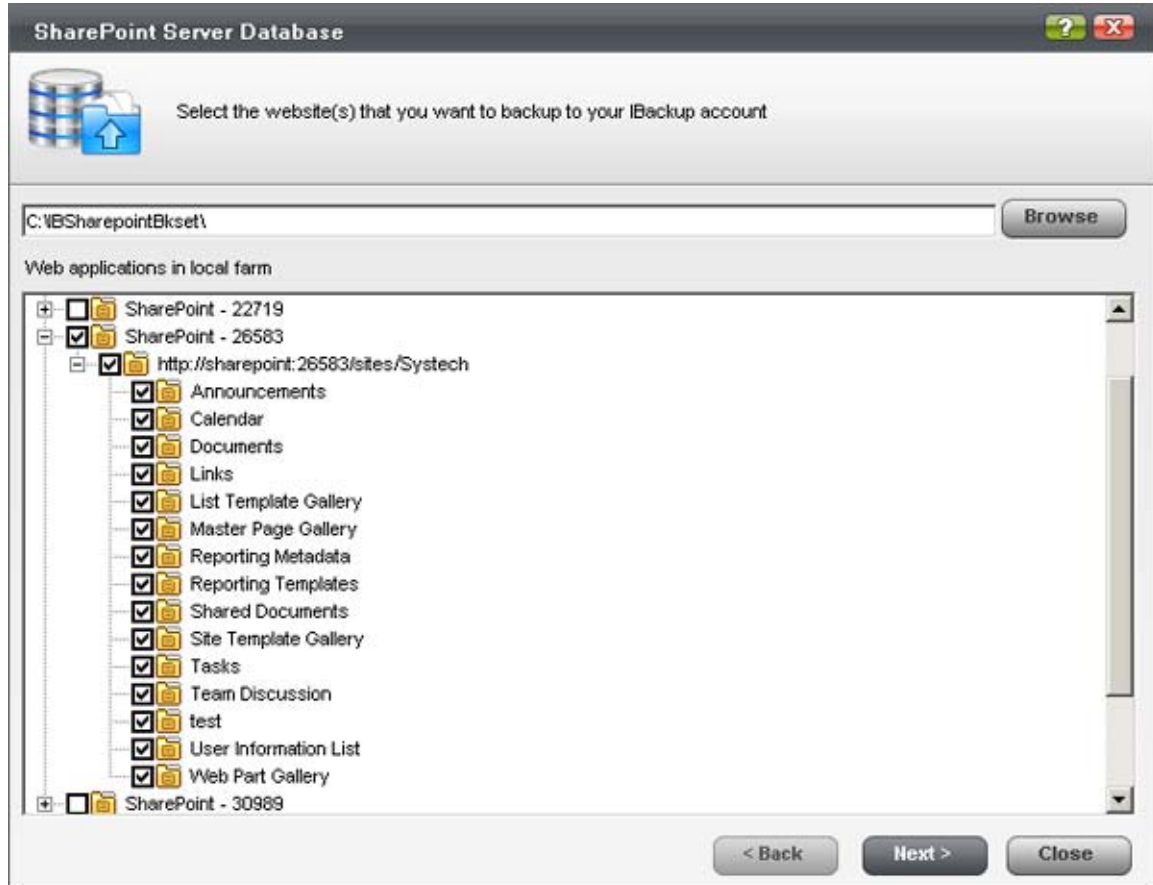
Access the SharePoint Server Backup option in the following ways:

- On the main application menu, go to Backup-Restore > SharePoint Server > SharePoint Server Backup
- Alternately, on the main application tool bar, go to Wizards > Advanced Backup > SharePoint Server > SharePoint Server Backup



**Step 2**

Select the Web-application, Sites, Sub-sites and list to backup.



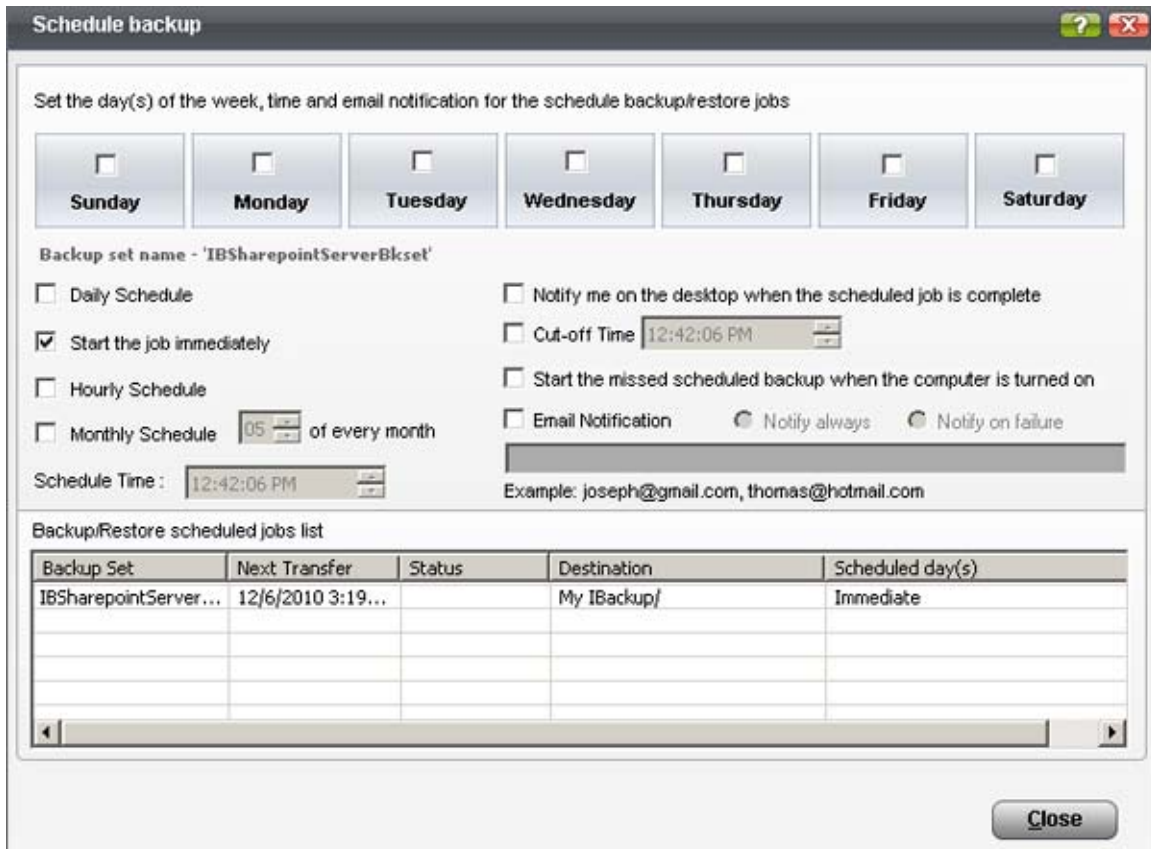
### Step 3

Click on the 'Browse' button to choose a temporary location on your local computer to store the selected SharePoint Server backup items. Click the 'Next' button.

**Note:** Ensure that the selected temporary location on your computer has sufficient free space to hold the contents of SharePoint Server backup items. You cannot select a temporary location on the remote location.

### Step 4

The 'Schedule backup' screen is displayed. Here you can schedule the backup for any future day and time or take an immediate backup of the selected Sites of MS SharePoint Server to your IBackup account.



Schedule backup

Set the day(s) of the week, time and email notification for the schedule backup/restore jobs

Sunday
  Monday
  Tuesday
  Wednesday
  Thursday
  Friday
  Saturday

Backup set name - 'IBSharepointServerBkset'

Daily Schedule
  Notify me on the desktop when the scheduled job is complete  
 Start the job immediately
  Cut-off Time 12:42:06 PM  
 Hourly Schedule
  Start the missed scheduled backup when the computer is turned on  
 Monthly Schedule 05 of every month
  Email Notification
  Notify always
  Notify on failure

Schedule Time: 12:42:06 PM  
 Example: joseph@gmail.com, thomas@hotmail.com

Backup Set	Next Transfer	Status	Destination	Scheduled day(s)
IBSharepointServer...	12/6/2010 3:19...		My IBackup/	Immediate

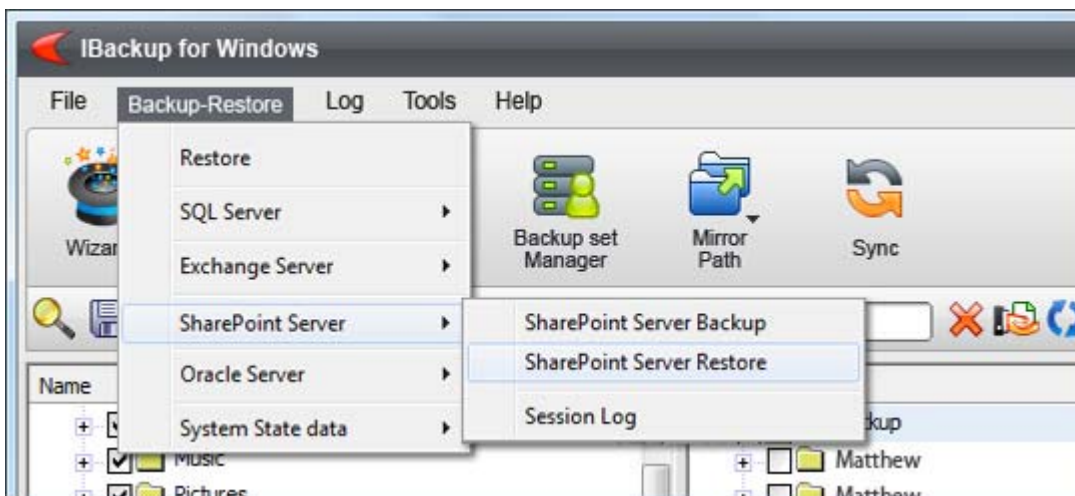
Close

## SharePoint Server Restore

Listed below are the steps to restore your MS SharePoint server using IBackup for Windows:

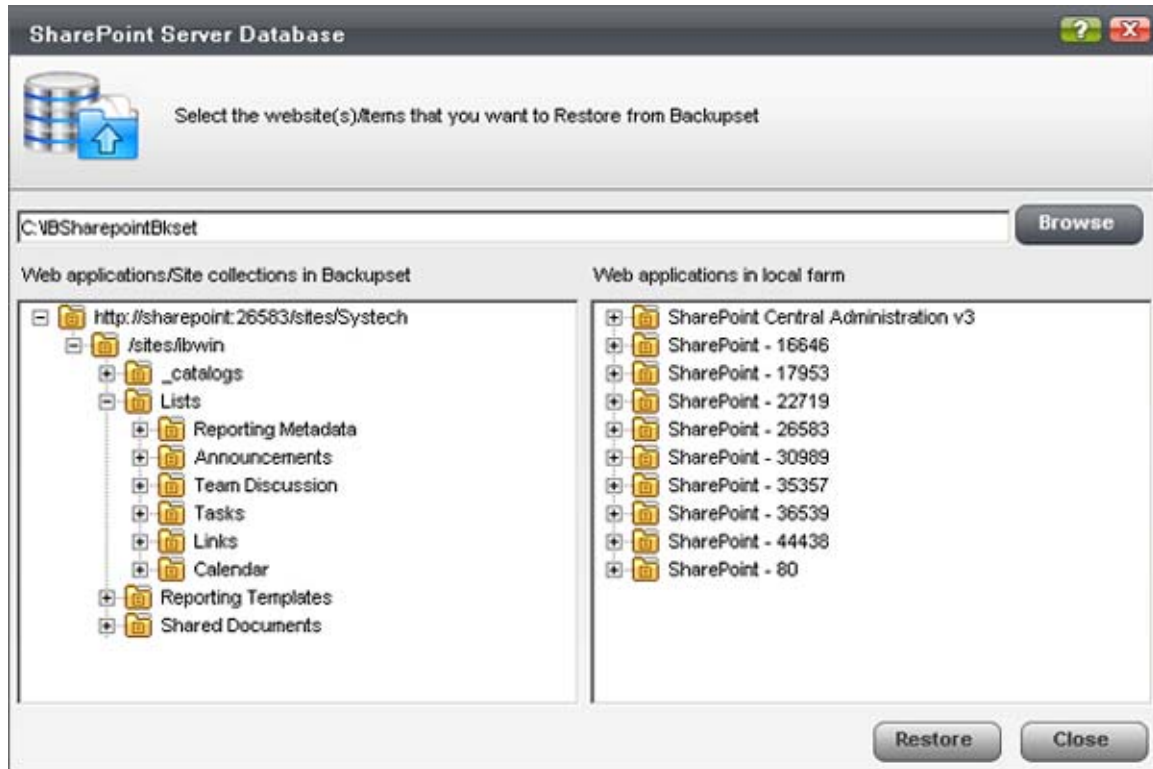
### Step 1

- Choose the MS SharePoint Server Restore option in any of the following ways: On the application menu, go to Backup-Restore > SharePoint Server > SharePoint Server Restore
- Alternately, on the application tool bar, go to Wizards > Advanced Backup > SharePoint Server > SharePoint Server Restore



## Step 2

Click the 'Browse' button and select the 'IBSharepointBkSet' folder that you wish to restore to your MS SharePoint Server.



## Step 3

Select the sites, list or document libraries that you wish to restore to the MS SharePoint Server.

## Troubleshooting Tips

The following are few simple troubleshooting methods, which could resolve few minor problems while working with IBackup for Windows application:

- SharePoint Server must have the latest service pack.
- It is highly recommended to have the latest service pack for Windows installed on the computer
- The system must have an ATX power supply and provide appropriate support in order for Automatic Power off to work, otherwise the machine will just reboot
- IBackup for Windows requires proxy settings if the computer is behind a proxy
- When the application hangs for a long time and no transfer occurs, logout of the application and re-login into the application

## IBackup Support

Pro Softnet Corporation,  
IBackup Division,  
26115 Mureau Road, Suite A,  
Calabasas, CA 91302.

### Telephone

1-800-949-3555 ext 3 within USA  
1-818-251-4200 ext 3 outside USA  
Monday - Friday, 6:00 AM to 6:00 PM PST

### Fax

1-818-878-9208

### Email address

[support@ibackup.com](mailto:support@ibackup.com)

For more information visit: <http://www.ibackup.com/>